

# CERTIFICATE OF LOCATION OF GOVERNMENT CORNER

NORTHEAST Corner of Section 5, Township 107N, Range 40W

5th Principal Meridian, State of Minnesota, County of Murray.

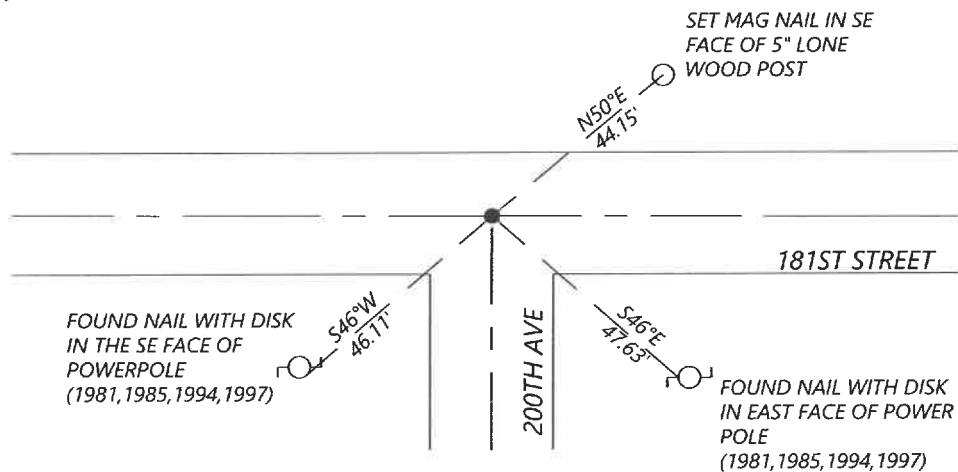
At the corner location shown on the sketch:

☒ On 11/07/2021 found a BENT 3/4"x26" SMOOTH BAR FLUSH WITH THE ROAD  
DATE

☐ left monument as found ☐ lowered monument ☒ removed monument (explain)

☒ On 11/07/2021 placed a 1/2"x18" REBAR CAPPED "RLS 57085" AT THE EXACT LOCATION OF THE BENT SMOOTH BAR.  
DATE

## SKETCH OF REFERENCE TIES



N.T.S.

Statement of evidence for this corner location is on back of this page.

I hereby certify that this document was researched and prepared by me or under my direct supervision and that I am a licensed Land Surveyor under the laws of the State of Minnesota.

Signature [Signature]

Date 4-18-2022 License No. 57085

Title:

☒ Land Surveyor ☐ Professional Engineer  
☐ County Surveyor ☐ County Engineer

## OFFICE OF THE COUNTY RECORDER

County of Murray

I hereby certify that this document was filed in the Co.

Recorder's office at \_\_\_\_\_ M. on the  
22nd day of April A.D. 20 22

County Recorder [Signature]  
by \_\_\_\_\_, Deputy

DOCUMENT NO. \_\_\_\_\_

SETH WECKMAN  
Minnesota License No. 57085

**Statement of Evidence:**

Northeast corner of Section 5, Township 107 North, Range 40 West, 5th Principal Meridian, Murray County, Minnesota.

- 1861 Original public land survey was completed by Jacob Myers. Set wood post and drove a charred stake and made a mound of earth and sod with trenches and pits.
- 1906 J.W. Woolstencroft, County Surveyor, shows a stake at corner in plat of subdivision.
- 1913 J.W. Woolstencroft, survey shows a blue stone at grade.
- 1936 National Park Service, map shows a stone at corner location.
- 1966 N.C. Hoium and Associates, dug a 5ft x 5ft x1.5ft hole, but a monument was not found.
- 1967 N.C. Hoium and Associates, set a 1/2" rod based on fences and evidence by Kosak, a resident of the area for 46 years.
- 1974 Unknown insert from Murray County, located a field stone 10" below the gravel road surface. Placed a steel pin above stone.
- 1981 McCombs-Knutson Associates, found a steel pin which was set in 1974 by the County Highway Department over a found stone.
- 1985 Gary Martin (RLS 12967), shows a 1/2" smooth bar over a stone at corner.
- 1994 Madsen Land Surveying, found a 5/8" rod, 2ft below the road surface. A 3/4" O.D. x 24" iron pipe was set over the found rod.
- 1997 DNR Bureau of Engineering, found a 1/2" x 23.5" iron pipe, down 0.4ft, over a 3/4" x 30.5" iron rod, down 2ft. The corner was excavated and a blue granite stone was found 5.33ft South and 3.8ft West of the found irons. Held the found stone and set a 3/4" x 24" rebar down 2.4ft, 1 ft east of the top center of stone, A DNR survey marker was set over the top center of stone.
- 2007 DNR, Bruce Shepperd (LS17003) surveys shows a DNR monument found.
- 2007 Zieske Land Surveying, Perry Zieske (LS 23008) surveys shows a found DNR Survey Marker.
- 2021 Westwood Professional Services searched the area and found a bent 3/4" x 26" smooth bar, flush with the road. The bent iron was measured from the base. The monument is +/- 1ft Southwest of the intersection of South/East/West road centerlines. The distance to the North quarter corner Section 4 matches the distances shown in the 2007 DNR survey and the 2007 Zieske survey within reason. Found two reference ties which fit the distances shown on the 1997 corner record. Accepting the position of the 3/4" smooth bar. Removed the bent bar and replaced it with a 1/2" x18" rebar with cap marked, "RLS 57085". Established one additional reference tie.

*Analysis of the recovered data, field evidence and survey measurements, indicates that the monument set is the correct perpetuation of this corner. For additional information concerning this corner please contact Westwood Professional Services.*